

**Date: Friday, 1st December 2023**

**Issue: 55**

## MESSAGE FROM THE HEAD TEACHER

As the weather gets colder, we seem to get busier! Last week Year 3 visited The Black Country Museum. I'm sure many of you have been there, and the children came back absolutely buzzing with knowledge that can only further enhance their learning. The highlight, as I'm sure Year 3 parents are aware of by now, was the explosion in the coal mine; quite scary for some, but an experience that I'm sure they'll never forget! Year 4 also had their Anglo-Saxon day last week making really good use of our Portal to fully immerse the children in what it was like to live in Anglo Saxon times. They all looked fabulous in their Anglo-Saxon costumes, so thank you to all Year 4 parents for your support with this.

There has been a bit of movement with our conversion to academy status. This week our Chair of Governors received a letter confirming our academy order, which essentially means that the DfE agree with the conversion in principle. Regarding the uniform change, Mrs Morris has been in regular contact with Dancers, and they are working in the background to source the different parts of the uniform so that I can present it to you during the spring term.

As I'm writing this Year 6 are out on their bikes doing our annual Bikeability course; something that we value greatly due to what it gives our children in terms of road safety and awareness.

Christmas gets even closer next week and rumour has it that Santa may even pay us a visit on Monday...

Have a great weekend.

## EVENTS

**2023**

**Mon 4th Dec**  
Santa visit

**Tues 5th Dec**  
Elderly Community  
Christmas Lunch

**Weds 6th Dec**  
Reception Nativity

**Y6 St John's Carol  
Service**

**Thurs 7th Dec**  
Nursery Xmas  
Celebration  
KS1 Xmas Dinner  
Xmas Jumper Day

**Fri 8th Dec**  
KS2 Xmas Dinner  
Xmas Jumper Day

**Tues 12th Dec**  
Y1 & Y2  
Xmas Performance 1

**Weds 13th Dec**  
Y1 & Y2  
Xmas Performance 2

**Thurs 14th Dec**  
Y4 Singing Around the  
Tree in Halesowen

**Mon 18th Dec**  
Y2 Polar Express PJ

**Tues 19th Dec**  
Y3 & Y5 Carols

**Wed 20th Dec**  
Y4 & Y6 Carols

**Thurs 21st Dec**  
Y1 Theatre Trip  
Y5 & Y6 Mini Xmas  
Fayre

## XMAS DINNERS & JUMPERS



A reminder that Xmas dinner will be served on  
Thursday 7th for Reception - Y2 and on Friday 8th for Y3 - Y6

Festive boxes will be served on the alternate days

Please ensure dinners are ordered by Sunday evening as there may not  
be availability for late orders.

Xmas jumpers can be worn on both days!



## AFTER SCHOOL CLUB

After School Club will be **CLOSED** on Friday 22nd  
December due to being the last day of  
term.



Apologies for any inconvenience.

## Notice

**Last Stay & Play**  
**5th December 2023**  
**Will return on**  
**16th January 2024**



**Santa is coming!!!**



**Santa will be visiting Newfield Park Primary School  
during the daytime on**

**Monday 4<sup>th</sup> December**

**Each class will have a time slot to visit Santa's  
Grotto, speak with the man himself and receive a  
gift!**

**This has been organised by our wonderful  
Parents Association**

**A contribution of**

**£2.50**

**can be made on your SchoolMoney account**







# COST OF LIVING SUPPORT HUBS

NEW

## Cost of Living Hubs are located at:

**Pensnett**, Grace Community Church, Tiled House Lane, Pensnett  
Open Tuesdays from 28th November 9:30am - 3:30pm

NEW

**Brierley Hill**, Brierley Hill Methodist Church, 24 Bank Street, Brierley Hill  
Open Alternating Wednesdays, 9:30am - 3:30pm

**Halesowen**, Halesowen Library, The Cornbow Centre, 7th Floor, Halesowen  
Open Alternating Wednesdays, 9:30am - 3:30pm

**Stourbridge**, Christ Church, High Street, Lye  
Open Thursdays from 28th September, 9:30am - 3:30pm

**Dudley**, Provision House, 80-81 High Street, Dudley  
Open Fridays, 9:30am - 3:30pm

## Winter Ready Criteria

Updated for the upcoming season, recognising the added financial strains. We are here to help!

**WE ARE OPENING A NEW HUB IN PENSNETT ON 28th NOVEMBER 2023!!**

The criteria for visiting the Cost of Living Support Hubs has also changed.

**FROM THE W/B 20TH NOVEMBER, HOUSEHOLDS CAN NOW VISIT  
THE COST OF LIVING SUPPORT HUBS 3 MORE TIMES.**

Attendance history will be wiped. It doesn't matter if you've attended a Hub before.

Households are permitted to attend up to 3 times starting from the week beginning 20th November.  
This means 3 visits across any of our Hubs and not each Hub.

Please remember there must be a minimum of 12 days between each appointment.

Households must reside in the Dudley Borough.

## Assistance Available

Insightful presentations on ways to save money on utilities  
and how to make your money stretch further.

Practical help relating to access to food, fuel, energy,  
available benefits, grants and funds based on qualifying criteria.

Issuing a voucher per household to purchase essentials  
(NB: these vouchers can only be issued in a crisis, and are subject to availability)

Issuing a fuel bank voucher  
(NB: subject to eligibility)

Identifying other organisations that can help with the struggles being experienced.

### How to Book

To see available dates and book an appointment visit our Eventbrite page:  
[https://CA\\_DudleyandWolverhampton.eventbrite.com](https://CA_DudleyandWolverhampton.eventbrite.com)

Support is only offered by attending a pre booked appointment.  
Appointments cannot be booked directly at the venues.

Appointments can only be booked via visiting our Eventbrite page.

Only one appointment per household is required, regardless of how many members of the household are attending on the day.

If you are not eligible your appointment may be cancelled  
or you will be refused entry on the day.

### ID Evidence Required

On the day of your appointment, you must bring with you 2 forms of ID:

1 form of ID with your Full Name (passport, travel pass, debit card, driving license etc)

AND

1 recent letter/bill dated within the last 3 months including your name and address  
to prove you're a Dudley Borough resident.  
(e.g. a recent council tax bill, gas/electric/water bill, benefits awards letter, letter from Dudley  
Council, letter from the Government, PIP or DLA letter, TV license etc)

We reserve the right to request photo ID when you are at the hub to authenticate your ID.

We reserve the right to cancel the appointment should we feel the ID is not that of the appointment holder or that the ID is not authentic.

**For more information on Cost of Living support, go to:**

<https://DudleyWolverhamptonCA.eventbrite.com>

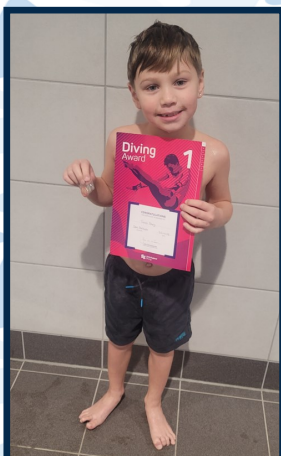
<https://www.dudley.gov.uk/costofliving>

<https://www.facebook.com/CitizensAdviceDudleyAndWolverhampton/>

Please share this information with the community to ensure we can support as many individuals and families as possible in the coming months.



## SUCCESS CORNER



Travis 2H has passed his Level 1 Diving at Sandwell Aquatics Centre and has jumped in off the 5 metre diving board!



A massive thank you to Pearl and Winston's dad for a donation of footballs to the school!



## Y6 BIKEABILITY

Year 6 had a great time completing level 2 and level 3 Bikeability this week. We first learnt how to check our bike to make sure it is safe for riding. We started the practical element on the playground and then moved on to local roads, having chance to practise both primary and secondary positions on the roads. We all made great progress in our riding skills!





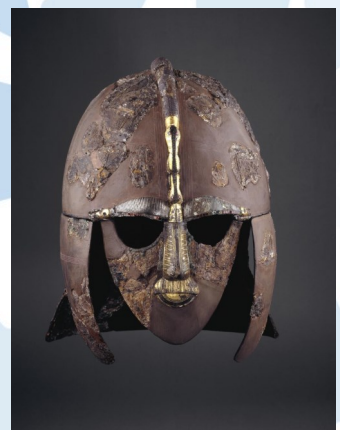
## YEAR 4 ANGLO SAXON DAY

On Thursday the 23rd November, Year 4 enjoyed Anglo Saxon Day. We spent the morning in an Anglo Saxon Village in the Portal, learning about the discoveries at Sutton Hoo and The Staffordshire Hoard, and making delicate decorated brooches. In the afternoon we perfected and performed our Anglo Saxon dance and performed plays about the finds at Sutton Hoo. We ended the day learning a song about Anglo Saxons. The children looked fantastic in their costumes and we all had a super day.

Ophelia: I really enjoyed doing the drama and it was fun doing it in our outfits.

Phoebe: Today I enjoyed everything but I mostly liked making the brooches and decorating them. I also like the plays since everybody did well.

Ezmae: I enjoyed it because my teacher pushed me out of my comfort zone so I really, really enjoyed my dancing lesson.



**BBC**  
**CHILDREN**  
**IN NEED**

**WE RAISED A**

**SPOTACULAR**

**£ 360.00**

**THANK  
YOU**





# MEASLES

## Don't let your child catch it

– get them vaccinated with the MMR vaccine

- measles outbreaks happen when not enough children have been vaccinated
- measles can be a very serious disease, leading to ear and chest infections, fits, diarrhoea, and damage to the brain. Measles can kill
- your child is at risk of measles if he or she hasn't had the MMR vaccination
- 2 doses of MMR vaccine are needed to get the best protection
- if your child is due to have had 2 doses of MMR but has not yet received them, no matter what age they are, you should contact your GP to get them vaccinated as soon as possible\*
- if you can't remember if your child has had any, 1 or 2 doses of MMR vaccine, check his or her personal child health record (the Red Book). If this doesn't help, speak to your GP
- if you don't know how many doses your child has had, it's better to have 2 doses of MMR vaccine now rather than risk leaving them unprotected

\*In response to a local outbreak then the 2 doses can be given one month apart from the age of 18 months.



## Operation Encompass

The school has been given the opportunity to take part in a project that will run jointly between schools and West Midlands Police. Operation Encompass is the reporting to schools, prior to 9am on the next school day, when a child or young person has been exposed to, or involved in, any domestic incident.

Operation Encompass will ensure that a member of the school staff, known as a Key Adult, is trained to allow them to liaise with the police and to use the information that has been shared, in confidence, while ensuring that the school is able to make provision for possible difficulties experienced by children, or their families, who have been involved in, or exposed to, a domestic abuse incident.

We are keen to offer the best support possible to all our pupils and we believe this will be extremely beneficial for all those involved.



# ATTENDANCE MATTERS!

When you're in school you...



Have the best possible start in life!

At Newfield Park every day counts!

# USEFUL INFORMATION

## SCHOOL OFFICE

A reminder to parents that the School Office is open from 8:00AM UNTIL 4:00PM.

You can email the school office for any non urgent enquiries including absences on:

[info@newfield.dudley.sch.uk](mailto:info@newfield.dudley.sch.uk)



## SCHOOL DINNERS

School dinners must be ordered by Sunday evening for the commencing week.

Unfortunately we may only be able to offer a very limited choice if no order is received, this is due to orders already being placed with our suppliers.



## Before & After School Club

Club is highly subscribed at the moment. If your child is not booked in please do not just turn up as there may not be a space. Bookings should be made by Sunday evening online.

New timings & charges: Breakfast club (7.30am - 8.55am) £5.00

After School Club (3.15pm - 5.30pm prompt) £8.00

Please contact Mrs Grant, BASC Manager on 07768893697

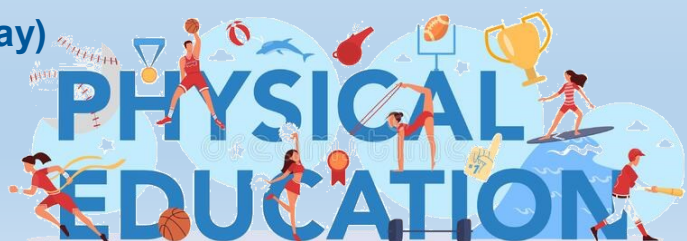


## PE

On PE days your child can come to school in their PE Kit.  
PE will take place both indoors and outdoors.

RB	Monday
RRY	Tuesday
Year 1	Wednesday & Friday
Year 2	Wednesday
Year 3	Monday (3P also on Tuesday)
Year 4	Thursday
Year 5	Monday
Year 6	Tuesday

No jewellery, including earrings, should be worn and long hair should be tied up.





# USEFUL INFORMATION



Please click on the above picture for further information on childhood vaccinations

**NHS**  
Black Country



Please click on the above picture for further information on whether to send your child to school due to illness

**Healthier Futures**  
Black Country Integrated Care System

## NEWFIELD COMMUNITY

Would your grandparent's or your elderly neighbours like to be part of our Newfield Park Community?

If yes, then please contact the school office



## Important Notice

CHILDREN USING THE MILLENNIUM GARDEN EQUIPMENT AFTERSCHOOL MUST BE SUPERVISED BY AN ADULT AT ALL TIMES AND VACATE BY 3:30PM

## PARKING ON SCHOOL SITE

We politely ask parents to not park on the staff car park.

This includes when dropping/collecting children from after school clubs and BASC

## DOGS ON SCHOOL GROUNDS

Please be aware that **no dogs**, either walking or being carried are allowed anywhere on the school grounds.



## CLIMBING TREES



Please **DO NOT** allow your children to climb the trees on the school grounds.

## PARKING

We are receiving numerous complaints from local residents with regards to parking on Whittingham Road and surrounding roads.

Could we please ask that parents/carers park considerately and walk whenever possible.

Many thanks for your support.



## SAFETY ADVICE

The Child Accident Prevention Trust has some good information on safety advice

Please click on the picture below for further information





# Should I keep my child off school?

## Yes

### Until...

Chickenpox	at least 5 days from the onset of the rash and until all blisters have crusted over
Diarrhoea and Vomiting	48 hours after their last episode
Cold and Flu-like illness (including COVID-19)	they no longer have a high temperature and feel well enough to attend. Follow the national guidance if they've tested positive for COVID-19.
Impetigo	their sores have crusted and healed, or 48 hours after they started antibiotics
Measles	4 days after the rash first appeared
Mumps	5 days after the swelling started
Scabies	they've had their first treatment
Scarlet Fever	24 hours after they started taking antibiotics
Whooping Cough	48 hours after they started taking antibiotics

## No

but make sure you let their school or nursery know about...

Hand, foot and mouth	Glandular fever
Head lice	Tonsillitis
Threadworms	Slapped cheek



SCAN ME

### Advice and guidance

To find out more, search for health protection in schools or scan the QR code or visit <https://qrco.de/minfec>.



## STAY & PLAY

Join us on  
**Tuesday Mornings**  
**9:00am - 10:30am**

We have a thriving Stay & Play for pre-school children where we offer a variety of planned activities designed to meet your child's developmental needs through creative and physical play.  
Join other parents/ grandparents /carers for a coffee and a chat!



£1 per child, 50p for additional children  
(drinks and healthy snacks included)

We look forward to seeing you!

## Online safety update

- Our school uses the RM SafetyNet filtering system, which blocks inappropriate content and operates on all devices connected to our network.
- RM also provide 'Smoothwall', an additional filtering system which monitors the use of devices by staff and pupils in real-time; our head and DSL are immediately notified of any causes for concern.
- When using Teams and other web-based Microsoft applications, children are only able to communicate with pupils and staff within Newfield Park; external contacts are blocked.
- The RM Unify service provides a secure web-portal through which children can access several services using their own password.
- Most devices in school are password controlled: children have their own passwords and log-ins.
- Children are encouraged to use well-known, reliable websites when researching a topic, which are often provided to them by their teacher using a QR Code or URL.

 Check out our twitter page on: [https://twitter.com/newfield\\_park](https://twitter.com/newfield_park)

## ATTENDANCE

27th Nov - 1st Dec 

RB	97.93		4OR	90.32
RRY	98.97		4S	92.76
1J	92.33		5C	95.00
1L	89.33		5R	95.00
2H	97.33		6A	94.44
2R	98.00		6M	89.66
3P	92.07		6R	93.67
3T	94.59			

Well done RRY!

All absences are recorded and followed up.

Please email the info box to let us know when your child is absent before 9:30am on the day of the absence .

## TERM DATES

### Autumn Term 2023

Term Starts: Monday 4th September 2023

Half Term: Mon 30th Oct - Fri 3rd Nov 2023

Term Ends: Friday 22nd December 2023

### Spring Term 2024

Term Starts: Monday 8th January 2024

Half Term: Mon 12th Feb - Fri 16th Feb 2024

Term Ends: Friday 22nd March 2024

### Summer Term 2024

Term Starts: Monday 8th April 2024

Half Term: Mon 27th May - Fri 31st May 2024

Term Ends: Monday 22nd July 2024

### Inset Days/School Closures

Monday 8th January 2024 (Inset)

Thursday 2nd May 2024 (Voting Day)

Monday 6th May 2024 (Bank Holiday)

Monday 22nd July 2024 (Inset)